

Waste Management



 **PORT of PITEÅ**

Welcome to the Baltic Sea

For your convenience all ports in this area regulated under the Helsinki Convention are equipped and work in a similar way¹ when it comes to sludge and waste management. They operate a 'no special fee system'². This means that a fixed fee will be added to your harbour fee whether waste or sludge is delivered or not.

Please note that all disposal of waste into the sea³ as well as incineration⁴ onboard is prohibited. As a general rule, you are required to discharge all ship-generated wastes, including sludge, at the port reception facility, before leaving port⁵.

Please make sure that your equipment is suitable for discharging sludge at a minimum rate of 5 m³/h in accordance with current regulations⁶.

For more information please visit: <http://www.helcom.fi/>

We hope that you will have a pleasant stay and a safe voyage. If you wish to deliver waste or sludge please notify the port 24 hours in advance⁷.

A manually operated trolley is available for use free of charge for transport of waste within the harbour area.

1 Helsinki Convention, Article 8.2. **2** Helcom Recommendation 28E/10. **3** Marpol Annex V, Regulation 5(2). **4** Helsinki Convention, Article 10.

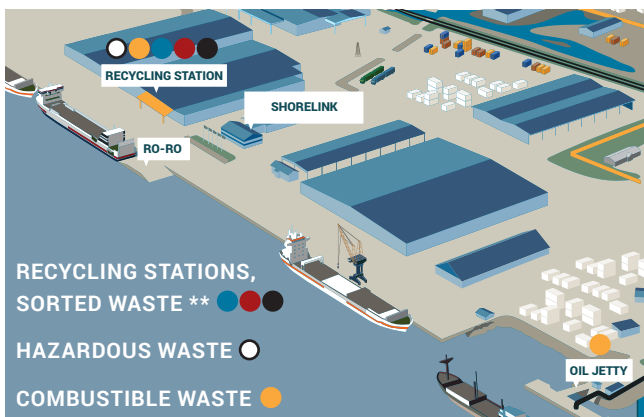
5 Helsinki Convention Annex IV, Regulation 6. **6** Marpol Annex I, Regulation 13.

7 Helcom Recommendation 23/1

Recycling procedures

WHEN VISITING OUR RECEPTION FACILITIES
YOU MUST FOLLOW THESE PROCEDURES:

- Deliver sorted waste to the recycling stations shown on the map.
- Hazardous waste containers must be tightly sealed and explicitly marked with a permanent marker.
- If the waste is not properly sorted, the vessel will be invoiced for the additional costs caused by further waste treatment.



CLEAR AND EASY INSTRUCTIONS MAKE
IT EASY TO CREATE THE HABIT OF RECYCLING

** MARPOL Annex V, Regulation 7, MARPOL Annex V,
Regulation 5(4)(a) Important to have an easy access to recycling stations.

Recycle in the following categories:

PLEASE NOTE: ALL YOUR SHIP-GENERATED WASTE MUST BE RECYCLED. CARGO RESIDUES MUST BE HANDLED AND PAID FOR BY THE SHIPPING COMPANY ITSELF.

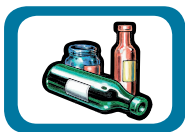
NON-HAZARDOUS WASTE



CORRUGATED CARDBOARD Separate blue plastic container inside the shelter.



PAPER PACKAGING Separate blue plastic container inside the shelter.



COLOURED GLASS Separate green plastic container inside the shelter.



CLEAR GLASS Separate green plastic container inside the shelter.

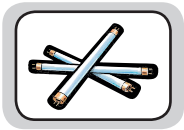


COMBUSTIBLE Waste that is not included in any of the categories above and is both combustible and non-hazardous must be placed in its own large steel container under the shelter for trucks.



RESIDUAL WASTE Waste that is not included in any of the categories above and is not bulky or hazardous must be placed in its own large steel container under the shelter for trucks.

HAZARDOUS WASTE



FLUORESCENT TUBES Place in light-brown hard paper cylinders.



LOW-ENERGY LAMPS Place LED and compact fluorescent lamps in the yellow tray.



LIGHT BULBS Place in the same yellow tray as low-energy lamps.



BATTERIES Place small ones in the small red tray, large ones in the large grey box.



ELECTRONICS For example TVs, hi-fi equipment, toys: place in cart with grating.



LIQUID OILS Such as motor and hydraulic oil on the deck of the blue rack.



OIL FILTERS In the green box under the shelter.



SOLID OIL WASTE Same green box as for oil filters.

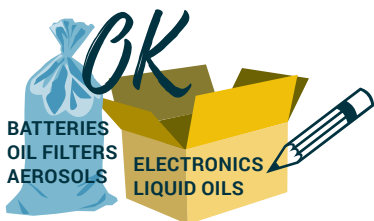


PAINTS AND SOLVENTS Place empty cans/pots on the wooden EUR pallet.



AEROSOLS Place empty cans/pots on the same EUR pallet as paints.

PLEASE NOTE: HAZARDOUS WASTE MUST NOT BE COMBINED IN ANY CONTAINER OR BAG UNLESS IT IS EXPLICITLY MARKED WITH A PERMANENT MARKER.



OTHER WASTE

Other waste not mentioned under the headings of **Non-hazardous waste** and **Hazardous waste** must not be left at the port. This applies, for example, to the following:

PYROTECHNIC DISTRESS SIGNALS

PLEASE NOTE: IT IS ILLEGAL TO DUMP OR DISPOSE OF ANY KIND OF EXPLOSIVE FLARE AT SEA OR ON SHORE.



OTHER PRESSURISED CONTAINERS

PLEASE NOTE: IT IS ILLEGAL TO DUMP PRESSURISED CONTAINERS SUCH AS FIRE EXTINGUISHERS AT SEA OR ON SHORE.



LIFEBOATS

PLEASE NOTE: IT IS ILLEGAL TO DUMP LIFEBOATS AT SEA OR ON SHORE.



Thank you for recycling



Contact list

| | |
|-----------------------------|--|
| Emergency: | Fire Service and Customs 112 |
| Front gate security: | Clas Johansson +46 (0)70 593 10 34 Harbour office +46 (0)911 23 21 30 |
| Harbour master: | Jens Åhman +46 (0)70-721 75 78 |
| Waste manager: | ShoreLink Shipping +46 (0)911 23 22 |
| Local agents: | 30 Cetonia Shipping +46 (0)911 180 20 |